



百合ヶ浜 (与論島)
Yurigahama Beach, Yoronjima Island



宮古崎ササント (奄美大島)
Miyakozaki Sasanto, Amami Oshima Island



トローキの滝 (屋久島)
Toroki Falls, Yakushima Island



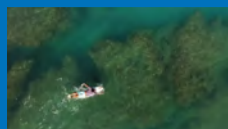
篠穂の滝 (奄美大島)
Shinoho Waterfall, Amami Oshima Island



百合ヶ浜 (与論島)
Yurigahama Beach, Yoronjima Island



永田いなか浜 (屋久島)
Nagata Inakahama Beach, Yakushima Island



手広海岸 (奄美大島)
Tebira Coastline, Amami Oshima Island



篠穂の滝 (奄美大島)
Shinoho Waterfall, Amami Oshima Island



百合ヶ浜 (与論島)
Yurigahama Beach, Yoronjima Island



永田いなか浜 (屋久島)
Nagata Inakahama Beach, Yakushima Island



手広海岸 (奄美大島)
Tebira Coastline, Amami Oshima Island



篠穂の滝 (奄美大島)
Shinoho Waterfall, Amami Oshima Island



千尋の滝 (屋久島)
Senpiro Falls, Yakushima Island



永田いなか浜 (屋久島)
Nagata Inakahama Beach, Yakushima Island



大島海峡 (加計呂麻島)
Oshima Channel, Kakeromajima Island



ホノホシ海岸 (奄美大島)
Honohoshi Coastline, Amami Oshima Island



千尋の滝 (屋久島)
Senpiro Falls, Yakushima Island



赤崎海岸 (与論島)
Akasaki Coast, Yoronjima Island



大島海峡 (加計呂麻島)
Oshima Channel, Kakeromajima Island



ホノホシ海岸 (奄美大島)
Honohoshi Coastline, Amami Oshima Island



千尋の滝 (屋久島)
Senpiro Falls, Yakushima Island



赤崎海岸 (与論島)
Akasaki Coast, Yoronjima Island



百合ヶ浜 (与論島)
Yurigahama Beach, Yoronjima Island



ホノホシ海岸 (奄美大島)
Honohoshi Coastline, Amami Oshima Island



篠穂の滝 (奄美大島)
Shinoho Waterfall, Amami Oshima Island



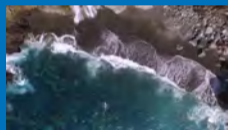
ナポレオン岩 (甑島)
Napoleon Rock, Koshikishima Islands



百合ヶ浜 (与論島)
Yurigahama Beach, Yoronjima Island



鯛之川 トローキの滝付近 (屋久島)
Tainogawa River, Yakushima Island



篠穂の滝 (奄美大島)
Shinoho Waterfall, Amami Oshima Island



瀬々野浦集落沖 ナポレオン岩付近 (甑島)
Off the coast of Senzenoura Village, Koshikishima Islands



デリキョンマ崎 (加計呂麻島)
Derikyonma Cape, Kakeromajima Island



鯛之川 トローキの滝付近 (屋久島)
Tainogawa River, Yakushima Island



篠穂の滝 (奄美大島)
Shinoho Waterfall, Amami Oshima Island



竹屋野海岸 (種子島)
Takeyano Coastline, Tanegashima Island



デリキョンマ崎 (加計呂麻島)
Derikyonma Cape, Kakeromajima Island



鯛之川 トローキの滝付近 (屋久島)
Tainogawa River, Yakushima Island



千座の岩屋 (種子島)
Chikura Cavern, Tanegashima Island



竹屋野海岸 (種子島)
Takeyano Coastline, Tanegashima Island



浜田海岸 千座の岩屋付近 (種子島)
Hamada Coastline, Tanegashima Island



ホノホシ海岸 (奄美大島)
Honohoshi Coastline, Amami Oshima Island



浜田海岸 千座の岩屋付近 (種子島)
Hamada Coastline, Tanegashima Island



平瀬崎 (甑島)
Hirasezaki Cape, Koshikishima Islands



浜田海岸 千座の岩屋付近 (種子島)
Hamada Coastline, Tanegashima Island



ホノホシ海岸 (奄美大島)
Honohoshi Coastline, Amami Oshima Island



浜田海岸 千座の岩屋付近 (種子島)
Hamada Coastline, Tanegashima Island



平瀬崎 (甑島)
Hirasezaki Cape, Koshikishima Islands



デリキョンマ崎 (加計呂麻島)
Derikyonma Cape, Kakeromajima Island



ホノホシ海岸 (奄美大島)
Honohoshi Coastline, Amami Oshima Island



手広海岸 (奄美大島)
Tebira Coastline, Amami Oshima Island



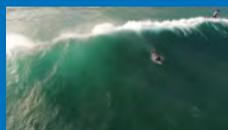
平瀬崎 (甑島)
Hirasezaki Cape, Koshikishima Islands



デリキョンマ崎 (加計呂麻島)
Derikyonma Cape, Kakeromajima Island



寺崎海岸 (与論島)
Terasaki Coast, Yoronjima Island



手広海岸 (奄美大島)
Tebira Coastline, Amami Oshima Island



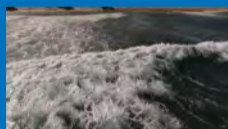
竹崎海岸 (種子島)
Takezaki Coastline, Tanegashima Island



屋久島灯台 (屋久島)
Yakushima Lighthouse, Yakushima Island



ミナタの離れ (与論島)
Minata Island, Yoronjima Island



手広海岸 (奄美大島)
Tebira Coastline, Amami Oshima Island



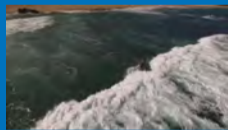
竹崎海岸 (種子島)
Takezaki Coastline, Tanegashima Island



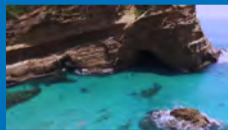
屋久島灯台 (屋久島)
Yakushima Lighthouse, Yakushima Island



百合ヶ浜 (与論島)
Yurigahama Beach, Yoronjima Island



手広海岸 (奄美大島)
Tebira Coastline, Amami Oshima Island



竹崎海岸 (種子島)
Takezaki Coastline, Tanegashima Island



鹿島断崖 (甑島)
Kashima Cliff, Koshikishima Islands



ミナタの離れ (与論島)
Minata Island, Yoronjima Island



横河溪谷 (屋久島)
Yoggo Valley, Yakushima Island



大島海峡 (加計呂麻島)
Oshima Channel, Kakeromajima Island



鹿島断崖 (甑島)
Kashima Cliff, Koshikishima Islands



永田いなか浜 (屋久島)
Nagata Inakahama Beach, Yakushima Island



横河溪谷 (屋久島)
Yoggo Valley, Yakushima Island



大島海峡 (加計呂麻島)
Oshima Channel, Kakeromajima Island



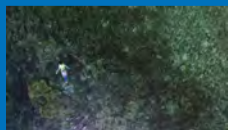
鹿島断崖 (甑島)
Kashima Cliff, Koshikishima Islands



永田いなか浜 (屋久島)
Nagata Inakahama Beach, Yakushima Island



横河溪谷 (屋久島)
Yoggo Valley, Yakushima Island



大島海峡 (加計呂麻島)
Oshima Channel, Kakeromajima Island



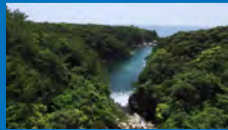
竹崎海岸 (種子島)
Takezaki Coastline, Tanegashima Island



永田いなか浜 (屋久島)
Nagata Inakahama Beach, Yakushima Island



宮古崎ササント (奄美大島)
Miyakozaki Sasanto, Amami Oshima Island



トローキの滝 (屋久島)
Toroki Falls, Yakushima Island



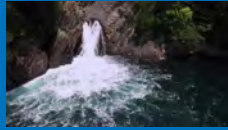
竹崎海岸 (種子島)
Takezaki Coastline, Tanegashima Island



永田いなか浜 (屋久島)
Nagata Inakahama Beach, Yakushima Island



宮古崎ササント (奄美大島)
Miyakozaki Sasanto, Amami Oshima Island



トローキの滝 (屋久島)
Toroki Falls, Yakushima Island



竹崎海岸 (種子島)
Takezaki Coastline, Tanegashima Island



BIRD'S EYE VIEW OF KAGOSHIMA